



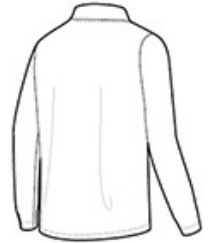
# Nike Therma-FIT Full-Zip Fleece. NKAH6418



Designed to help keep you warm during cold-weather workouts, this breathable Nike Therma-FIT style manages moisture to perform. It's designed with a zip-through collar, reverse coil zippers, front zippered pockets and open cuffs. The contrast heat transfer Swoosh design trademark is on the left sleeve. Made of 7-ounce, 100% polyester Therma-FIT fabric.\*\*

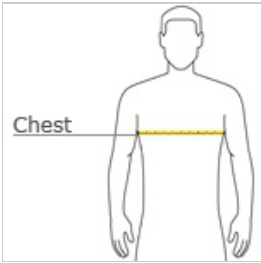


front



back

## HOW TO MEASURE



### CHEST

With arms down at sides, measure around the upper body, under arms and over the fullest part of the chest.

## SIZE CHART

	XS	S	M	L	XL	2XL	3XL	4XL
Chest	32-35	35-37 1/2	37 1/2 -41	41 - 44	44-48 1/2	48 1/2 - 53 1/2	53 1/2 - 58	58-63

## COLOR INFORMATION



Anthracite



Black



Dark Grey  
Heather



Game Royal



Midnight Navy



# Nike Therma-FIT Full-Zip Fleece. NKAH6418

## PRODUCT MEASUREMENTS

	XS	S	M	L	XL	2XL	3XL	4XL
Body Length at Back	26 3/4	27 1/2	28 3/8	39 1/8	30 1/8	31 1/2	32 5/8	33 7/8
Chest	18 7/8	20 1/2	22	23 5/8	25 1/2	27 1/2	29 1/2	31 1/2
Sleeve Length	33 7/8	34 7/8	35 1/2	36 1/8	37	37 3/4	38 5/8	39 3/8

### BODY LENGTH AT BACK

Measured from high point shoulder to finished hem at back.

### CHEST

Measured across the chest one inch below armhole when laid flat.

### SLEEVE LENGTH

Start at center of neck and measure down shoulder, down sleeve to hem.